

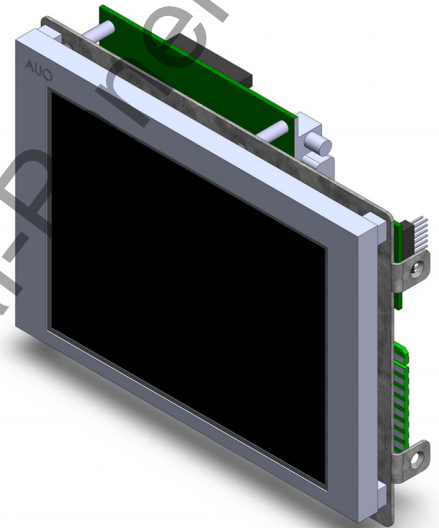
## ***QES1506 Series*** ***6" CRT Replacement Display***

### **Introduction:**

Industrial-Panels **QES1506 Series LCD Industrial Monitor** is a **5.7 inch open frame monitor** designed to be a **6 –Inch CRT Replacement Monitor**. These **Industrial Monitors** are rugged, high performance 5.7-inch Active Matrix COLOR TFT LCD monitors, designed as a drop-in replacement for many **industrial 6 inch open frame monitors**. It's rugged steel chassis is designed to drop into the mounting holes of the original industrial 6-inch CRT, making it unnecessary to replace the original chassis. Its multi-frequency plug & play capability enables this RGB LCD monitor to interface with a wide variety of video formats for easy replacement of your **legacy CRT display**.

With 15KHz through 68KHz operation, optional TTL video capability, contrast ratios of 800:1 and brightness levels of 700 cd/m2, the **QES1506 Series** color LCD TFT display is an excellent choice for many **legacy industrial display** needs. Standard features such multi-language on-screen display, DDC1/2B Plug and Play, and wide viewing angle capability making this a versatile LCD display. This Open-Frame chassis drops directly into **Yasnac CNC / JANCD GSP10 DF6101675** and is a direct replacement of **Matsushita TR-6DA1**.

Our engineers understand, no matter how thoughtful our designs are, there are always things you need to modify from this base design. That is the reason our open frame monitor is very flexible to modify into your project requirements. Call us today at 800.793.6862 or email us at sales-IP@dynamicdisplay.com



### **Features:**

- 5.7" TFT-LCD Display with LED Backlight
- AC 90-264V Power Standard or 12VDC Power
- 15.75 to 100 KHz -Specially designed for Slow Scan Signals - Legacy Timings
- **Yasnac CNC / JANCD GSP10 DF6101675** Special Timing
- CGA, EGA, MDA and all VESA STD VGA
- Composite Video (NTSC) – RCA Jack
- Custom designs including spec, color, finish and format
- Direct Replacement **Matsushita TR-6DA1**
- Drop directly into the mounting holes of the a 6" **CRT Monitor**
- High Bright TFT Display, 700 Nits
- High Contrast – 800:1 Typical
- Image Size & Position Adjustment
- Open Frame Rugged Construction

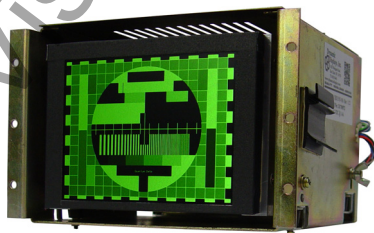
- Rugged Industrial-grade Steel chassis
- Solid State LED Backlight
- Touch Screen: Resistive, Capacitive and SAW option

### **Options:**

- 12V, 24V, 28 and 48V DC Input Voltage Options
- Anti-Reflective Protective Faceplate Option
- Conformal Coating of Internal Assemblies for Enhance Ruggedization.
- Custom Designs based on Customer's Exact Needs
- RCA (NTSC/PAL) and 5 Pin Mini Din (S-video)
- RS170 & RS343 Interlace Formats
- Touch screen option (Resistive and Capacitive)
- Wireless Remote Control Option

## *QES1506 Specifications*

Size/Technology	5.7 inch VGA Color TFT LCD Module
Image Size	115.2 mm x 86.4mm
Pixel Pitch	0.18 mm x 0.18 mm
Back Light	50,000 Hours Typical
Viewing Angle (h/v)	80°(R) - 80°(L) / 70°(U)- 70°(L)
Contrast Ratio	800:1 Typical
Brightness (typ)	700 cd/m <sup>2</sup>
Response Time (typ)	15 mSec Rising – 10 mSec Falling
Colors	262K Colors – 6 Bits
Supported Video Formats	640 x 400 @ 85Hz 640 x 480 @ 60/72/75/85Hz 640 x 480 @ 56/60/72/75/85Hz - Native Resolution Legacy Products 15 to 68KHz Horizontal Freq.
Input Signals	Video: 0.7Vpp @ 75 Ohms Sync: Separate or Composite Sync TTL Level; Sync on Green Video (Positive) 0.7Vpp-Sync (negative) 0.3Vpp Horizontal: 15 to 68KHz; Vertical 50 to 85Hz
Input Interface	HD15 (VGA Analog)- DVI-D
External Connectors	Analog HD15 D-Sub Input; Digital DVI Input: DC Input.
Power Requirements	100-240VAC 50-60Hz or +12VDC @ 1.5A
Environmental	
Temperature: Operating	-30° to 85°C @ 5-95% R.H.
Storage	-30° to 80°C @ 5-95% R.H.
Altitude: Operating	0 to 14,000 ft.
Storage	40,000 ft.
Mechanical Configuration	Open Frame
Dimensions	4.5" (H) x 5.8" (W) x 1.7" (D) Kit Only
Mounting	8-32's Screws (4)
Construction	Heavy Duty Stainless Steel
Weight	1.25 Lb.
Warranty	Two Year Limited Warranty
Options	12V, 24V, 28 and 48V DC Input Voltage Options Anti-Reflective Protective Faceplate Option Conformal Coating of Internal Assemblies for Enhance Ruggedization. Custom Designs based on Customer's Exact Needs RCA (NTSC/PAL) and 5 Pin Mini Din (S-video) RS170 & RS343 Interlace Formats Touch screen option (Resistive and Capacitive) Wireless Remote Control Option



*Chassis Provided by Customer*

**Dynamic Displays, Inc.**  
1625 Westgate Road – Eau Claire, WI 54703  
1-800-793-6862 – Fax: (715) 835-2436  
[www.dynamicdisplay.com](http://www.dynamicdisplay.com)

0015093 Rev A